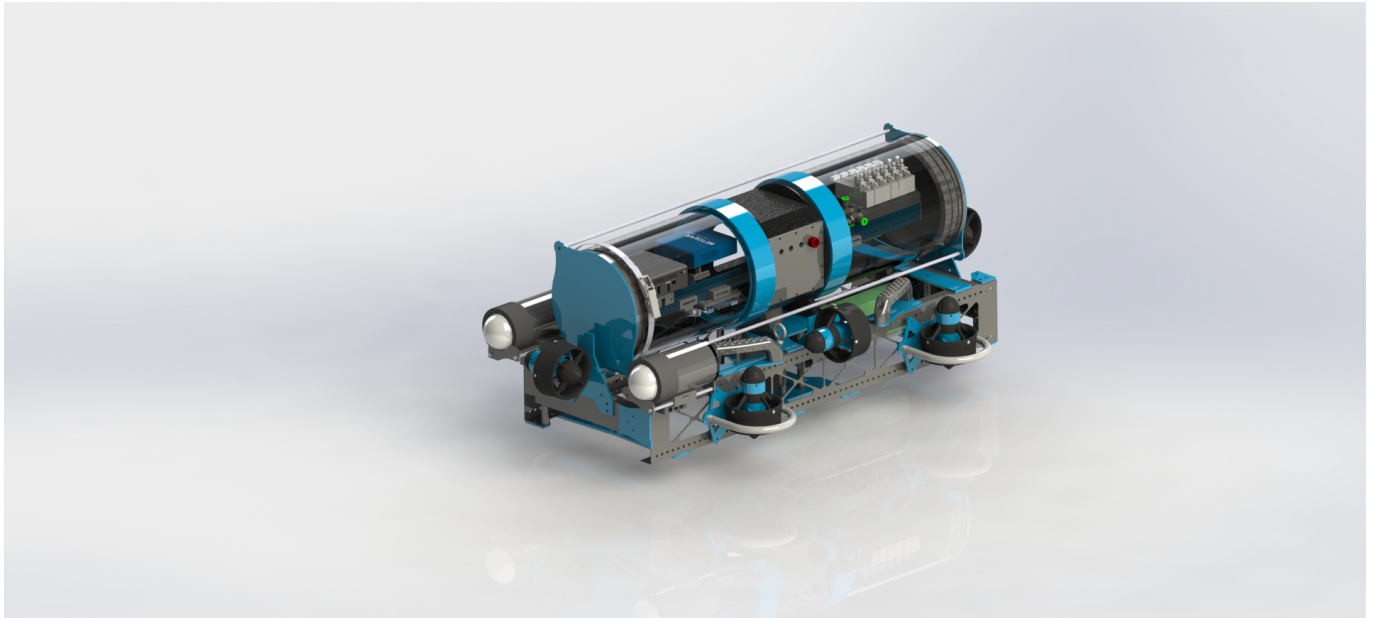


Mechanical Engineering

Welcome to the Mechanical Engineering Page!

The Goal of this Wiki is to be the primary hub for everything mechanical related for the AUV from instructions on O-rings to Solidworks Drawing Standards for our team.



From:

<http://robosub-vm.eecs.wsu.edu/wiki/> - **Palouse RoboSub Technical Documentation**

Permanent link:

<http://robosub-vm.eecs.wsu.edu/wiki/me/start?rev=1472446911>



Last update: **2016/08/28 22:01**