

How to Order Parts

All of our parts get ordered through Quartzly. Quartzly is an inventory software that keeps all of our orders in one location. Please ask us to get you an account if you don't have one yet.

For normal parts (i.e. stuff of Amazon), make sure you have the URL of the page for it and possibly the part number. Please enter the exact price listed on the page.

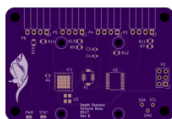
For OSHPark orders, once you have uploaded your documents to the OSHPark website, go to your projects, and share the project. Get a permalink for the project and use it to when submitting your order on Quartzly.

Your Current Projects

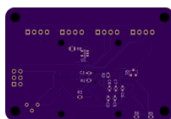
My Shared Projects

depthSensorBoard.kicad_pcb

2 layer board of 2.63 x 1.76 inches (66.7 x 44.6 mm).
Shared on February 14th, 2018 23:18 Uploaded on February 14th, 2018 23:14.



Top



Bottom

Previous orders:

- February 14th, 2018 (RECEIVED) [View order](#)

depth sensor board

[Delete](#)
[Edit](#)
[Stop Sharing](#)
[Permalink](#)
[Embed Link](#)
[Order Board](#)

For Digikey Orders, click "share cart" and copy the link given by Digikey. Use that link when submitting a purchase order on Quartzly.

Quantity	Part Number	Customer Reference			All prices are in USD.									
<input type="text"/>	<input type="text"/>	<input type="text"/>	<input type="button" value="Add to Cart"/>		Index	Quantity	Image	Part Number	Description	Customer Reference	Available Quantity	Backorder Quantity	Unit Price	Extended Price
<input type="text" value="16"/>	311-100KRCCT-ND				1	16		RES SMD 100K OHM 1% 18W 0905	R1 R2 R3 R4 R5 R6 R7 R8 R9	<input type="text" value="16"/>	Immediate	0	0.02200	\$0.35
<input type="text" value="1"/>	402210K-3.3TRG100CT-ND				2	1		IC REG LINEAR 3.3V 300MA SOT23-5	U1	<input type="text" value="1"/>	Immediate	0	0.42000	\$0.42
<input type="text" value="10"/>	311-1395-1-ND				3	10		CAP CER 1UF 16V X7R 0805	C1	<input type="text" value="10"/>	Immediate	0	0.07900	\$0.79
<input type="text" value="10"/>	1276-2087-1-ND				4	10		CAP CER 4.7UF 6.3V X7R 0603	C9	<input type="text" value="10"/>	Immediate	0	0.09900	\$0.99
<input type="text" value="1"/>	298-15777-1-ND				5	1		TRANS BNPN DARL 50V 0.5A 1850	IC1	<input type="text" value="1"/>	Immediate	0	1.53000	\$1.53
<input type="text" value="10"/>	160-1446-1-ND				6	10		LED GREEN CLEAR 0603 SMD	D9 D10	<input type="text" value="10"/>	Immediate	0	0.21100	\$2.11
<input type="text" value="3"/>	587-1293-1-ND				7	3		CAP CER 2.2UF 16V X5R 0805	C3	<input type="text" value="3"/>	Immediate	0	0.16000	\$0.48
<input type="text" value="1"/>	SER40700CT-ND				8	1		CRYSTAL 16.00 MHZ 9PF SMD	U2	<input type="text" value="1"/>	Immediate	0	0.56000	\$0.56

Input

New Cart - create a new empty cart
 Fast Add - bulk add multiple part numbers to your cart
 Add Carts - add previous carts
 Add BOM - add existing BOMs
 Add Quote - add previous Quotes
 Resume Cart - resume a previous cart
 Upload to Cart - upload a file, csv, txt, xls, xlsx

Options

Update Stock Status - refresh the quantity available

Output

Download - save a copy of your cart in spreadsheet format
 Cart Share - create a new cart including only the quantity, part numbers, and customer reference

From: <http://robosub-vm.eecs.wsu.edu/wiki/> - Palouse RoboSub Technical Documentation

Permanent link: <http://robosub-vm.eecs.wsu.edu/wiki/ee/partsordering?rev=1518651282>

Last update: 2018/02/14 15:34